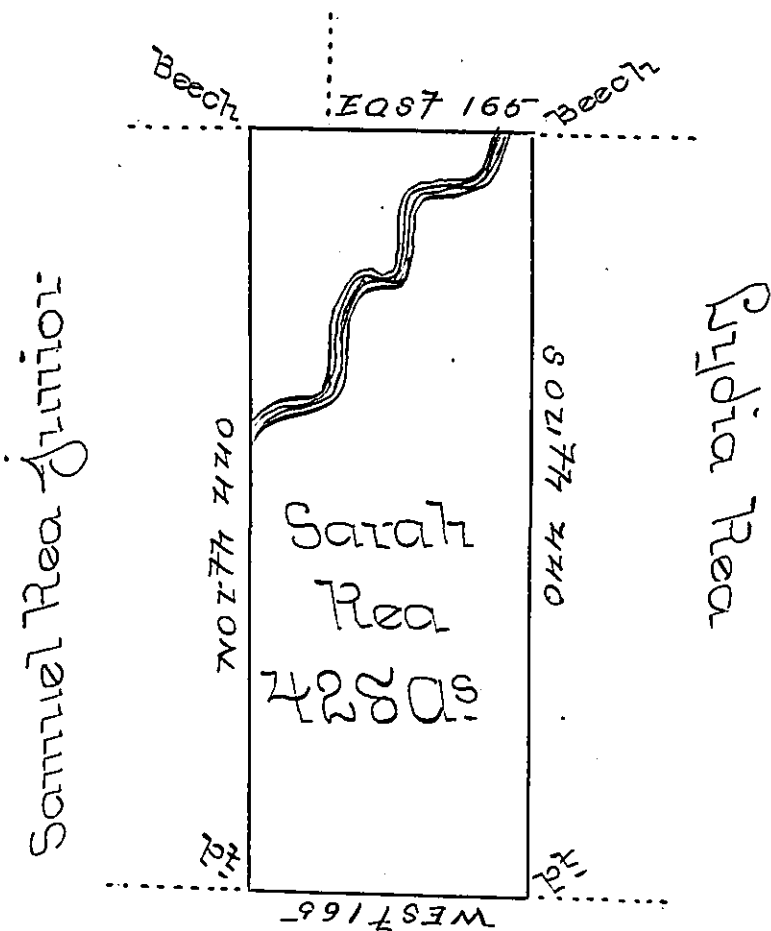


Henry Rea Junr Rachel Rea



Amos Rea

Situate in District No 8 North and West of the Alleg-  
 Henry & Ohio Rivers and Connewana Creek in the  
 County of Allegheny Containing four hundred & twenty  
 eight Acres & Allowance of six per Cent Surveyed the  
 12<sup>th</sup> of October 1799 by Order of Resurvey of the 16<sup>th</sup>  
 of May 1799 and by on a Warrant granted to Sarah  
 Rea dated the 10<sup>th</sup> of April 1793

Alexander Mc Dowell D.S.

To Daniel Brodhead Esquire }  
 Surveyor General }

*IN TESTIMONY* that the above is a copy of the original remaining on file in  
 the Department of Internal Affairs of Pennsylvania, made  
 conformably to an Act of Assembly approved the 16th day of  
 February, 1833, I have hereunto set my Hand and caused  
 the Seal of said Department to be affixed at Harrisburg,  
 this fourth day of October 1898.

*James W. Latta*  
 Secretary of Internal Affairs.